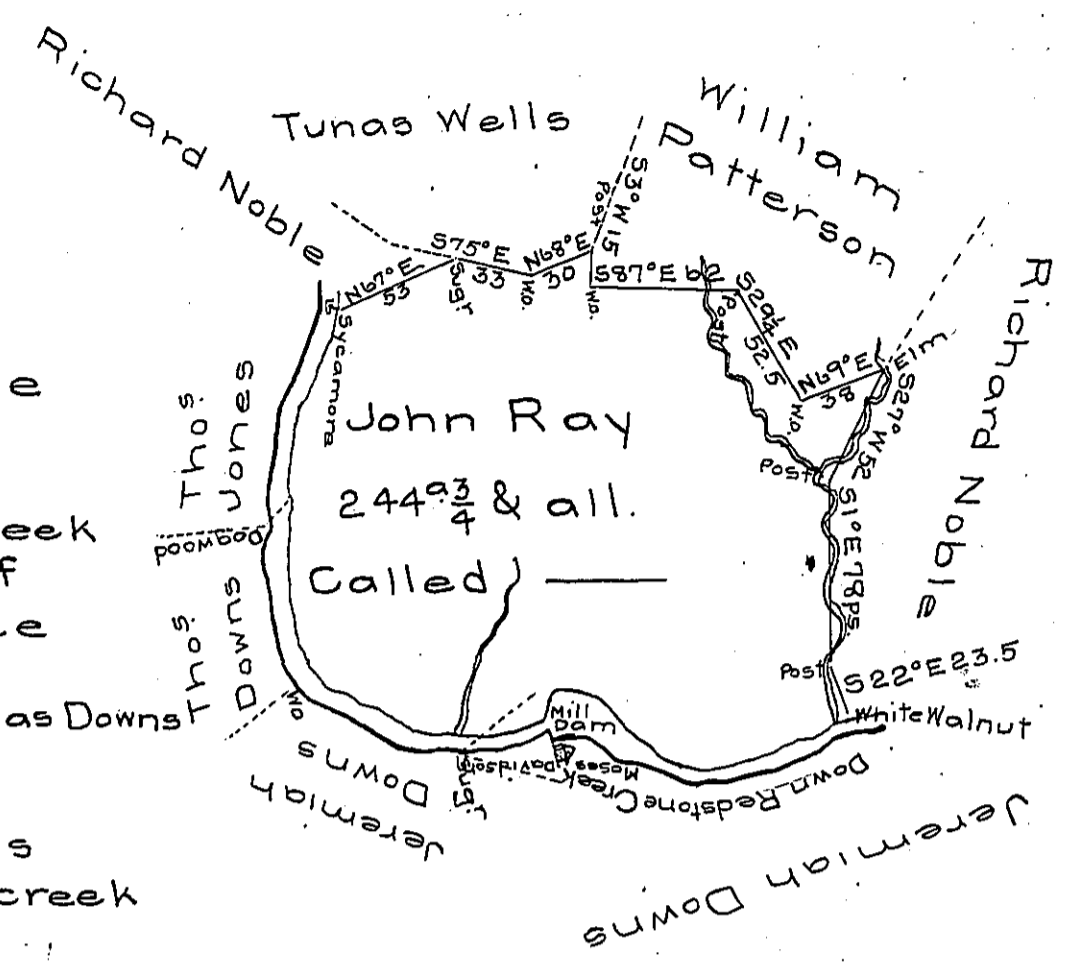


Courses & Distances down Redstone Creek from a White Walnut (V.iz)

S 71° W 55 ps.
 N 78° W 20.5 ps.
 N 84³/₄° W 29.3 ps.
 N 49° W 36.7 ps.
 N 60° W 7.7 to a small Elm
 149.2
 near a W.O. & leaning over the Mill Dam thence
 N 84¹/₄° W 10 ps. thence
 S 56³/₄° W 50.5 across the creek to a Sugar tree a corner of Jeremiah Downs thence
 S 77° W 12 ps.
 N 59° W 47 ps. W.O. corner of Thomas Downs
 N 9¹/₂° W 69 ps. to a dogwood =
 128
 a corner of Thomas Jones's thence N 42° E 16 ps. across the creek
 N 11° E 30
 N 19° E 53.4 to a sycamore
 83.4



Situated adjoining Great Redstone creek in Washington township Fayette county & surveyed the 19th day of December 1788 In pursuance of a Warrant Dated the 27th day of November 1788.

By Alexander McClean
 Deputy

To John Lukens Esquire
 Surveyor General

IN TESTIMONY that the above is a copy of the original remaining on file in the Department of Internal Affairs of Pennsylvania, made conformably to an Act of Assembly approved the 16th day of February, 1833, I have hereunto set my Hand and caused the Seal of said Department to be affixed at Harrisburg, this thirteenth day of July 1906.

Isaac B. Brown
 Secretary of Internal Affairs